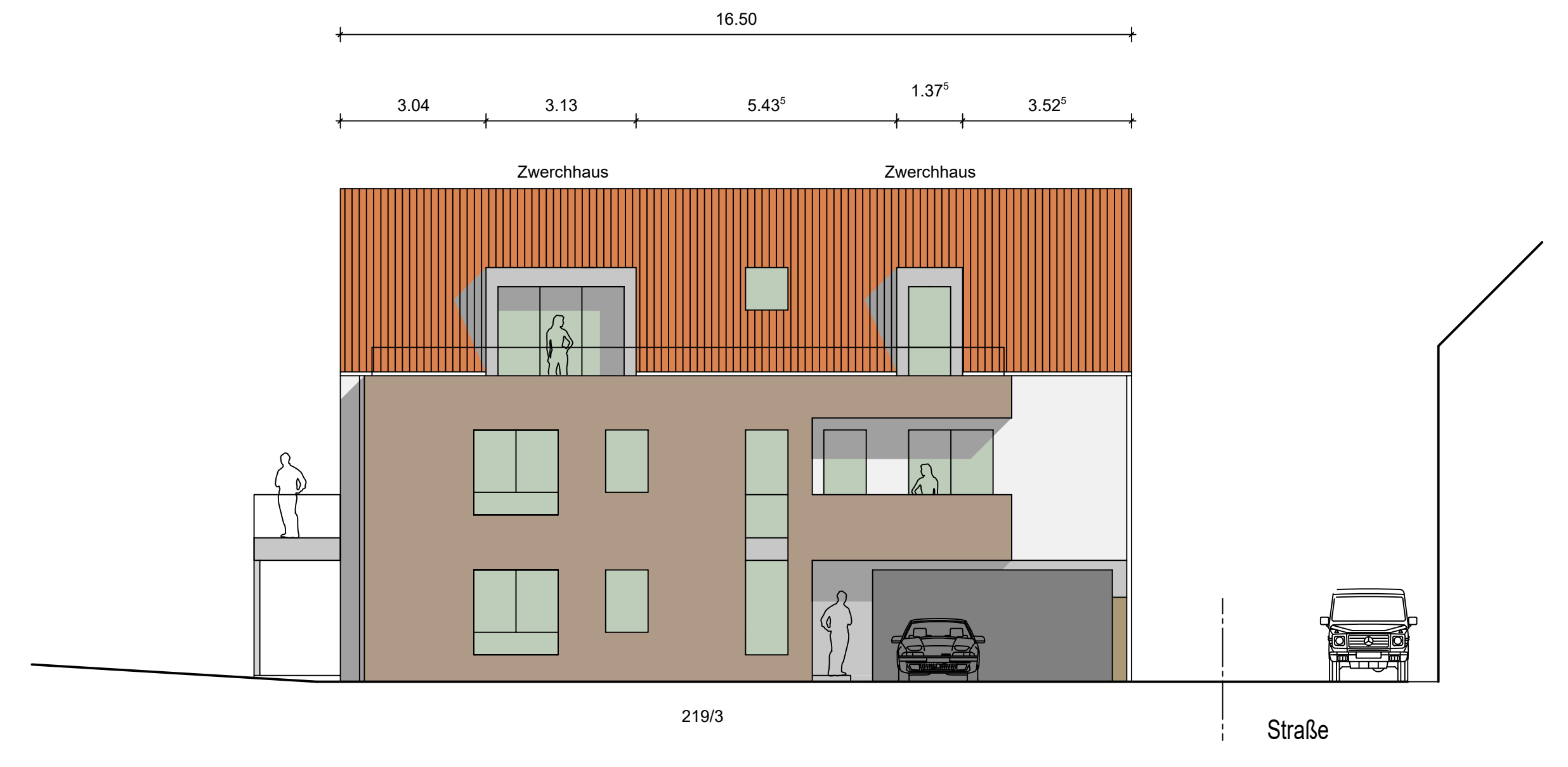


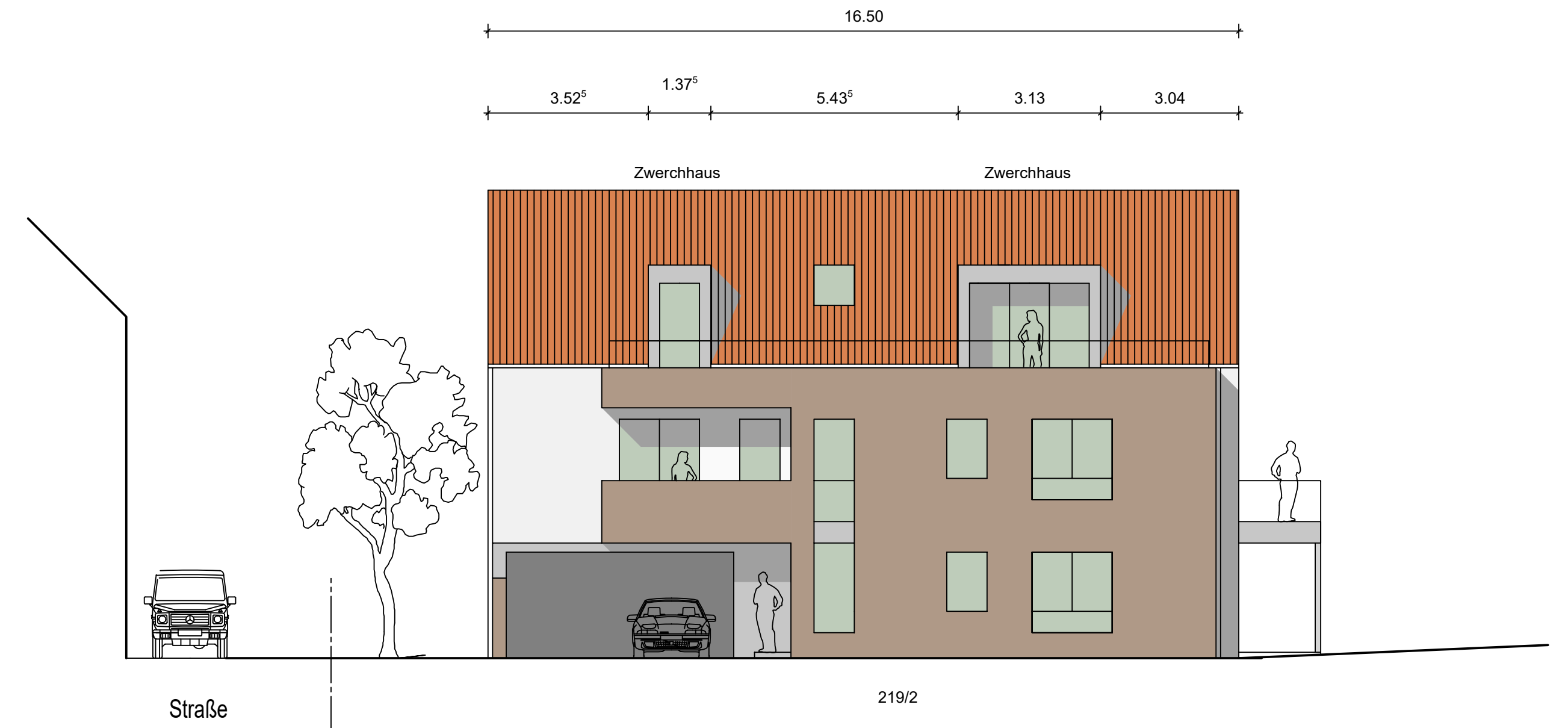
N-W



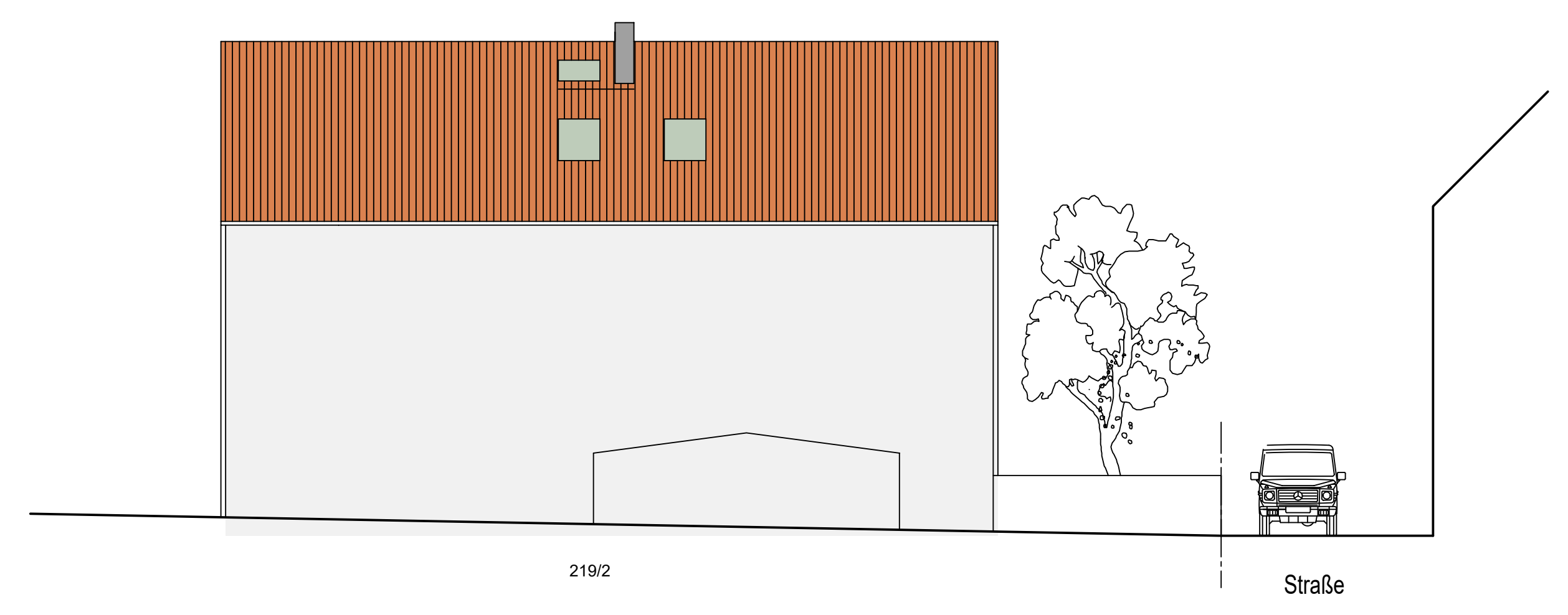
N-O



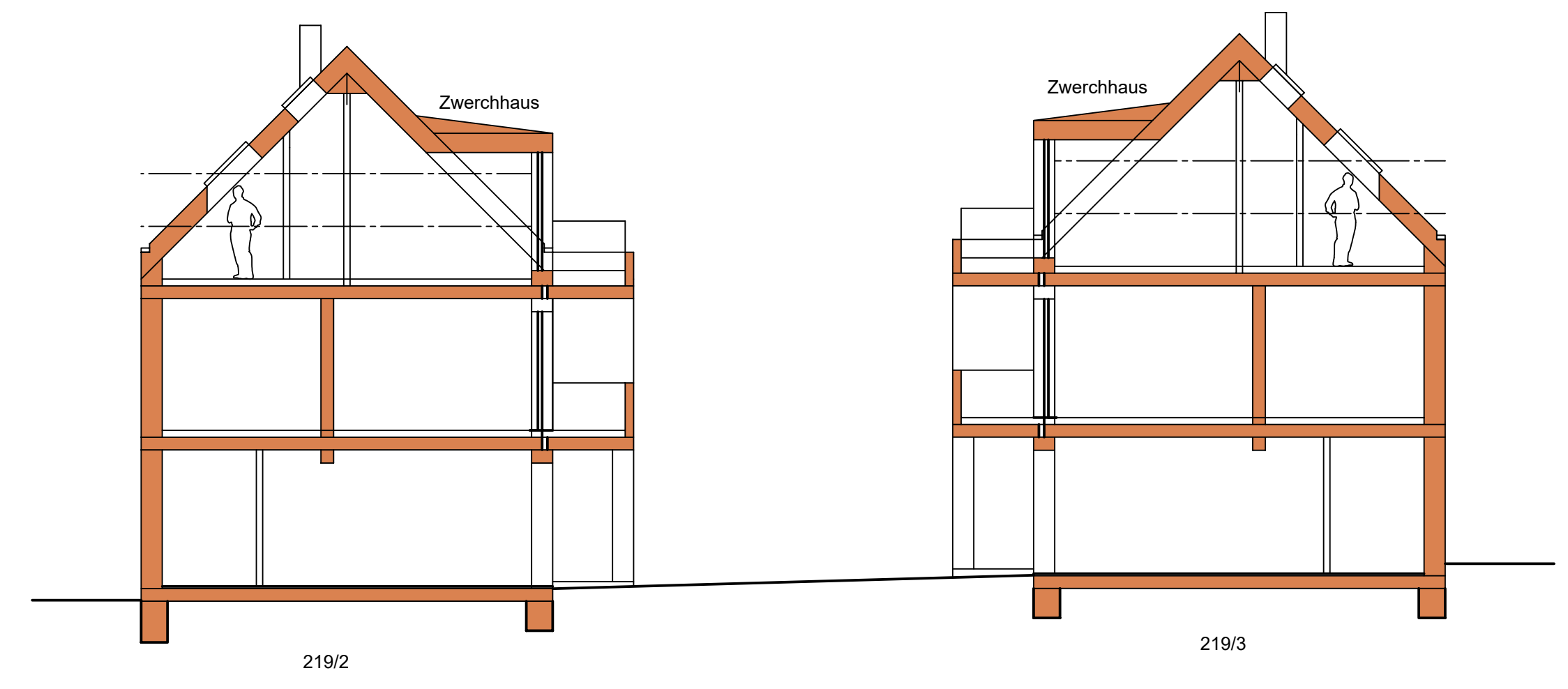
S-O



S-W

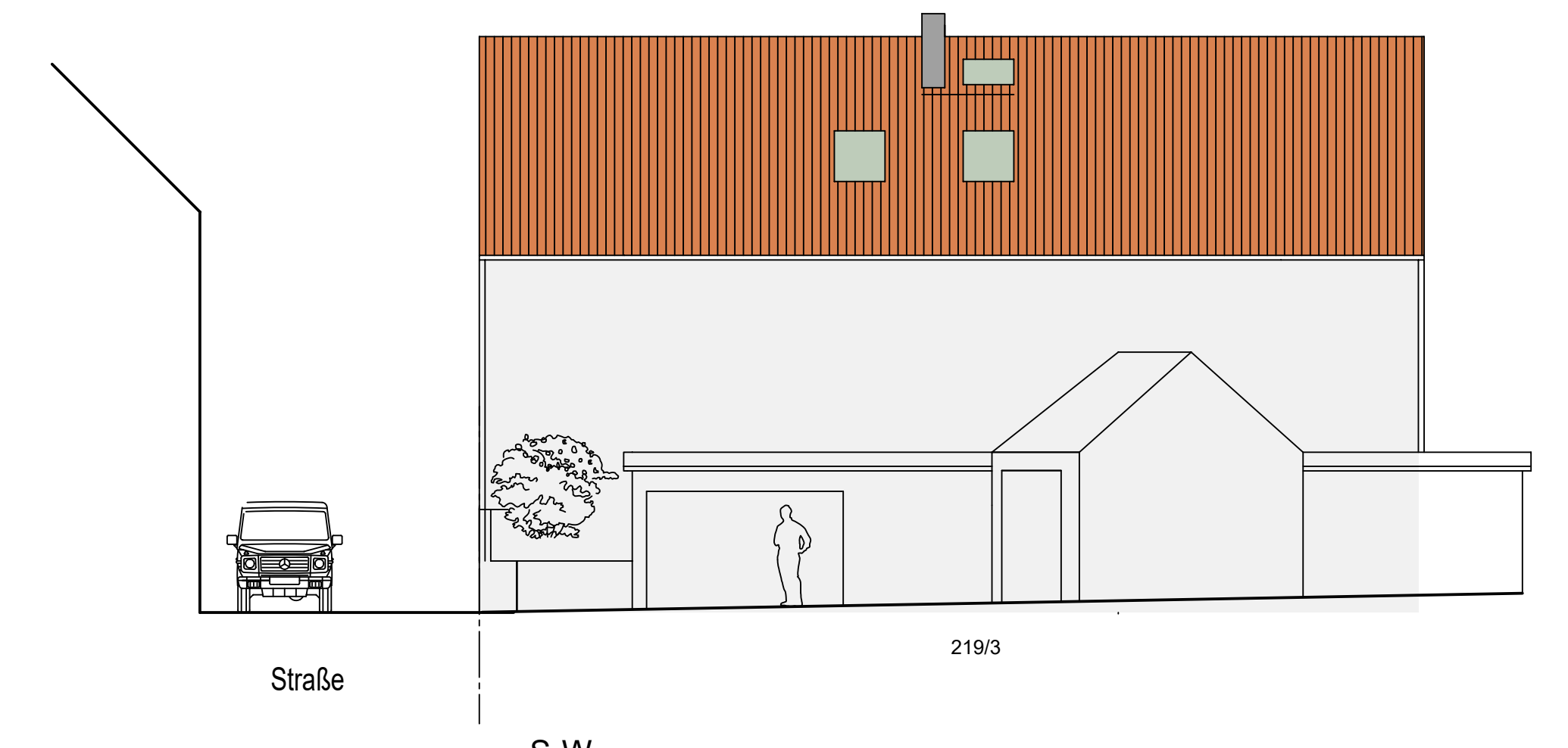


N-O

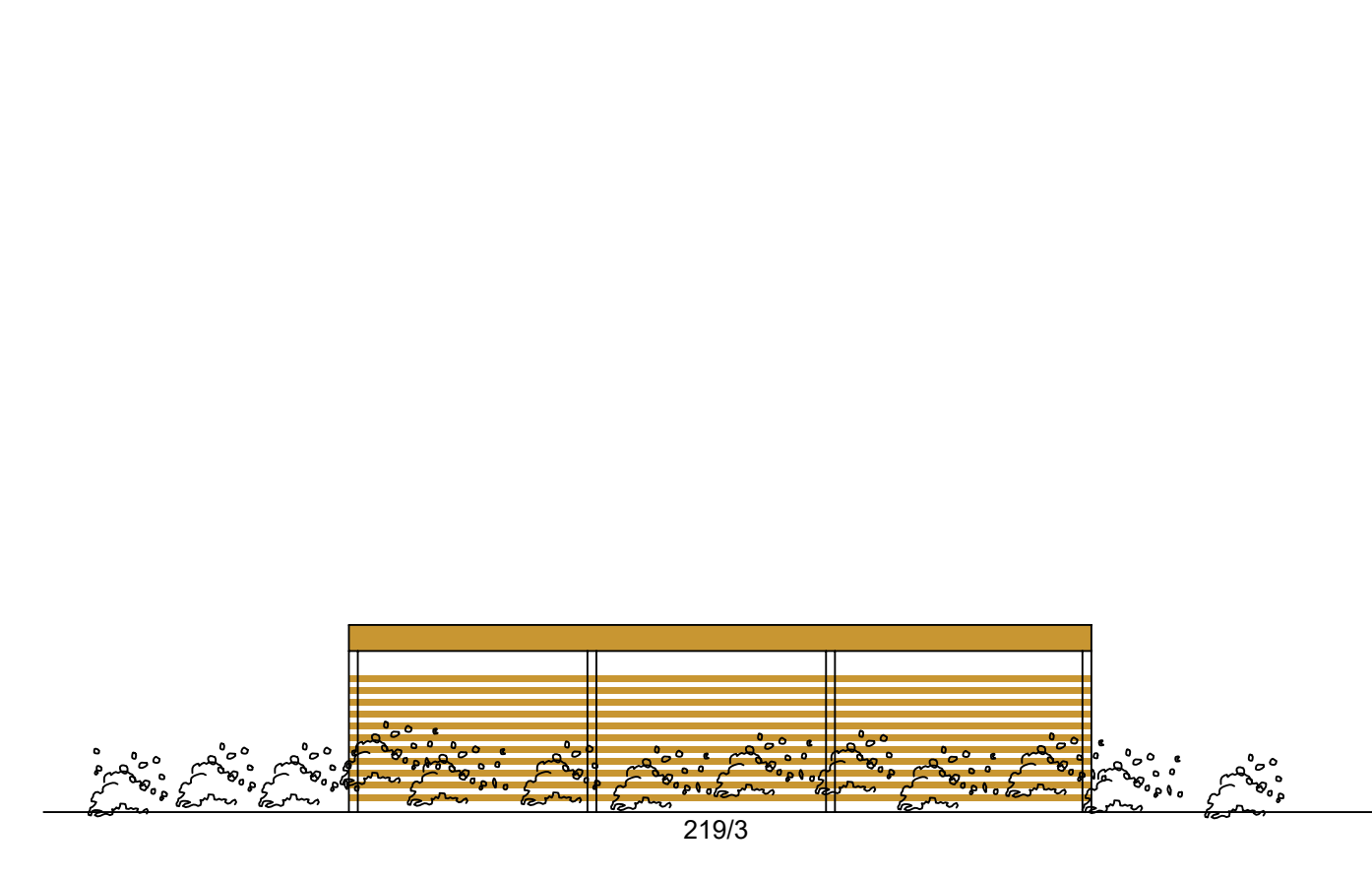


219/2

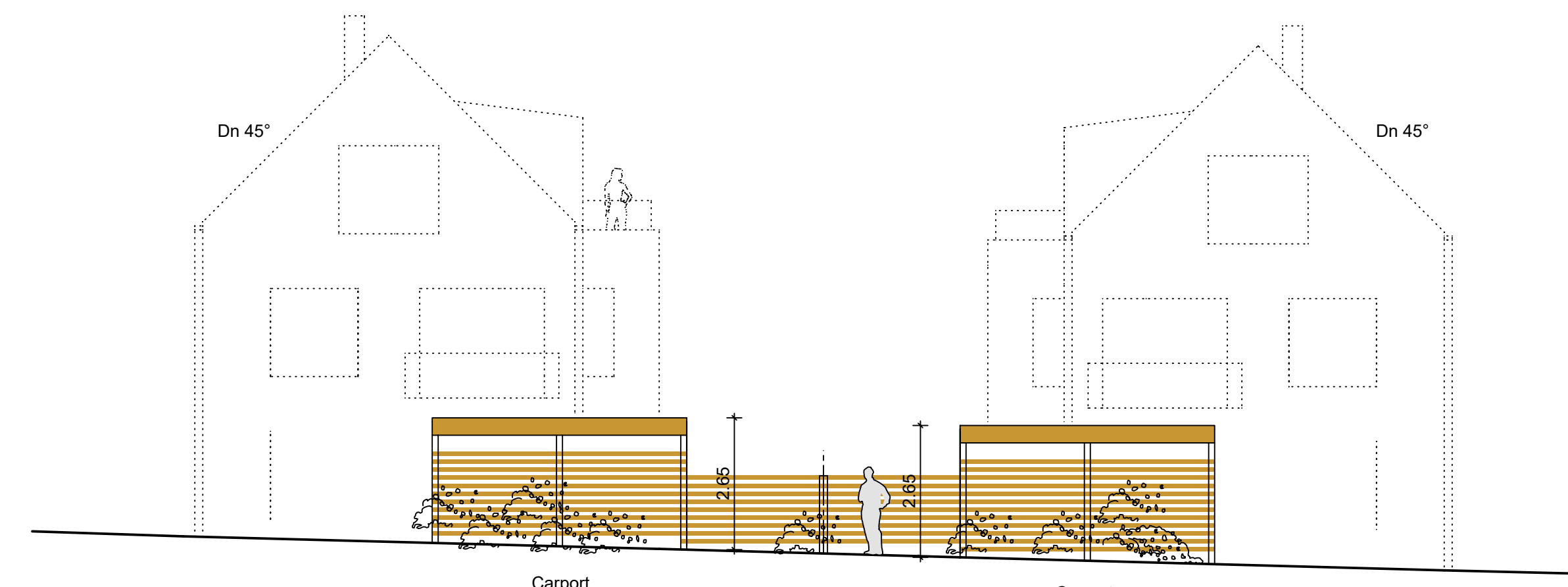
219/3



S-W



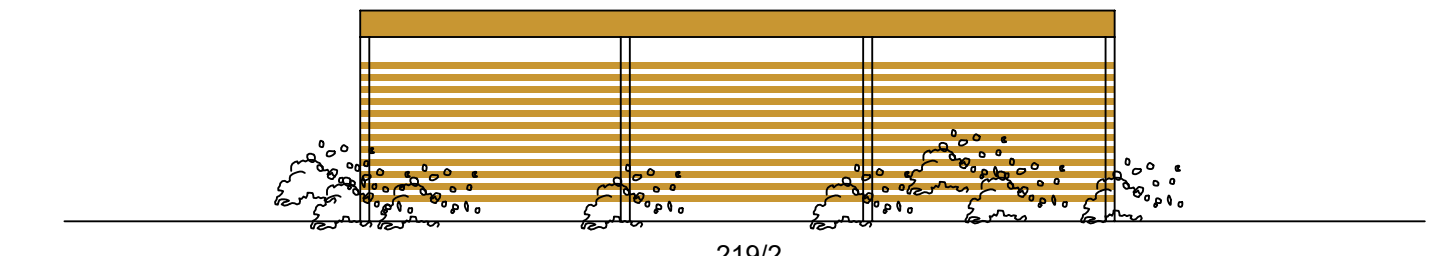
S-W



Carport 219/3

S-O

Carport 219/2



219/2

N-O

Entwurfsplanung 30.08.16
Ansichten

Errichtung von zwei Mehrfamilienhäusern
in Röllsdorf, Schreinerergasse, Flur 0, Flurstück Nr. 219/2, 219/3
Baubereit: Erich Schmunk, Michael Schindler
Planung: Architekturbüro Lehmann und Piesker, Erlacher Straße 11, 64380 Röllsdorf
Tel: 06154-693 690, Fax: 693 639
Datum, Unterschrift

